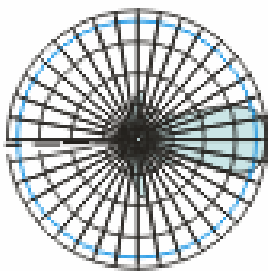
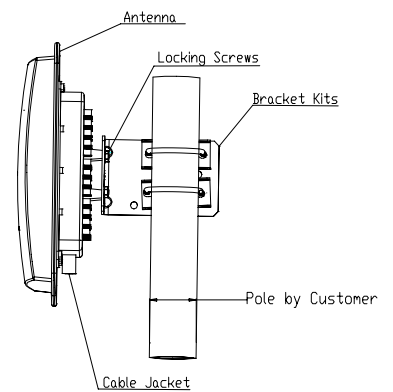




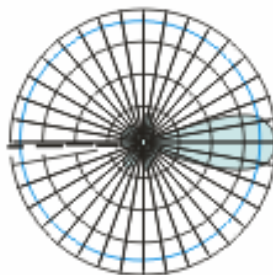
2.4GHz 17dBi Wireless bridge antenna

Specifications:

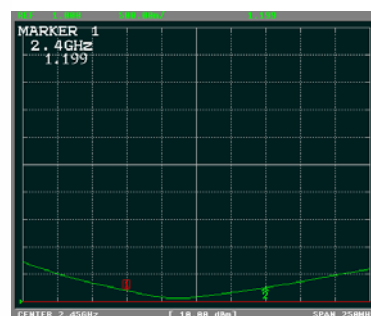
Model	GHD2400V1720
Frequency Range	2400-2500MHz
Bandwidth	100MHz
Gain	17dBi
F/B Ration	≥25
Beam width	E:23° H:23°
V.S.W.R	≤1.5
Max power	50W
Nominal Impedance	50 Ω
Lightning protection	Direct ground
Connector	SMA
Pole Installation	φ 40-50MM
Dimension	257x257x47mm
Weight	2kg



E-plane



H-plane



VSWR